

瑞士迪爾斯多夫 文豪斯瑞貝格住宅  
**Wohnhaus Rebberg,**  
**Dielsdorf, Switzerland**  
 L3P 建築師事務所  
 L3P Architects

主要建築師：包瑞斯·艾格爾  
 結構工程：Bona + Fischer Engineers Office AG  
 景觀設計：vetschpartner Landschaftsarchitekten AG  
 照明設計：Lichtblick  
 空間性質：住宅  
 基地面積：291 平方米  
 主要建材：混凝土  
 主要結構：鋼筋混凝土  
 座落位置：瑞士迪爾斯多夫  
 影像：維托·史泰隆  
 採訪：劉湘怡  
 文字：L3P 建築師事務所  
 整理：李永慈

Principal Architects · Boris Egli  
 Structural Engineering · Bona + Fischer Engineers  
 Office AG  
 Landscape Gardeners · vetschpartner  
 Landschaftsarchitekten AG  
 Light Planner · Lichtblick  
 Character of Space · House  
 Site Area · 291 m<sup>2</sup>  
 Principal Materials · Concrete  
 Principal Structure · Reinforced Concrete  
 Location · Dielsdorf, Switzerland  
 Photos · Vito Stalione  
 Interview · Rowena Liu  
 Text · L3P Architects  
 Collector · Irene Lee



剖面圖 A-A SECTION A-A

剖面圖 B-B SECTION B-B

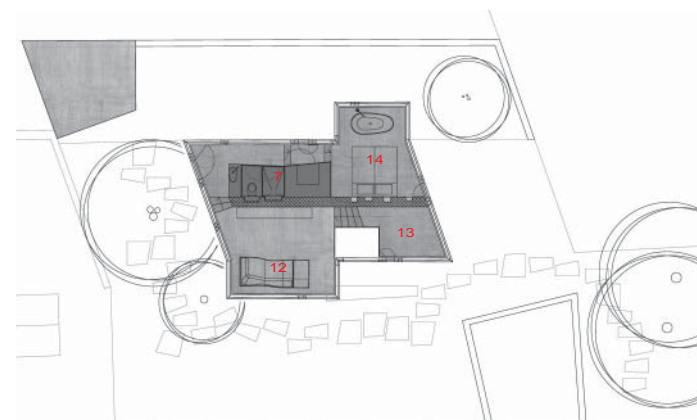
1. 車庫 2. 地窖 3. 臥室 4. 餐廳 5. 多功能空間 6. 廚房 7. 客廳 8. 衛浴 8. 主臥室

1. garage 2. cellar 3. bedroom 4. dining room 5. multi-purpose space 6. kitchen 7. living room 8. bathroom 8. master bedroom

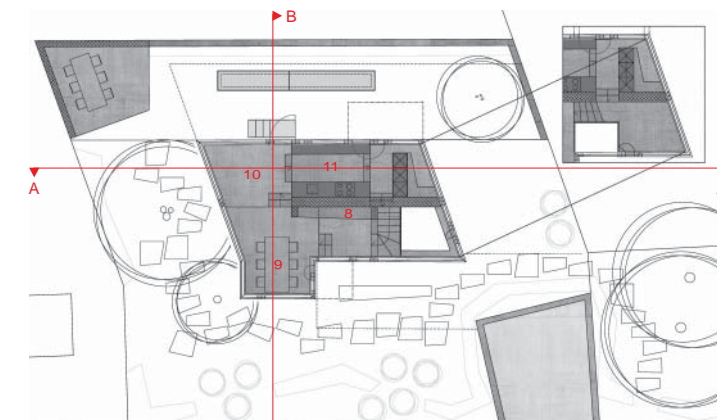
扣除必須保留的邊界後，這個位於迪爾斯多夫 (Dielsdorf) 葡萄園、小而陡的地段僅有 5 公尺 x 9 公尺的面積。因為地面上至多剩餘 8 平方公尺，所以該地段長久以來被建築界認為是不可能的任務。這裡容不下一棟帶有紮實外牆、傳統入口式階梯和流動區域的典型住宅。房間和結構合而為一，是建築師和結構工程師跨界合作的作品。屋內處處可見帶有雕塑感的鋼筋混凝土和黑色外觀混凝土覆蓋的鋼架：牆面、天花板、地板甚至書櫃等都是這些鋼架的一部份。沒有地毯、隔音、鋪地板、粉刷和油漆等可以掩飾鋼架的顯露。整座住宅以質樸的風貌呈現，整體裸露的混凝土只有幾個簡單的基本元素，輔以多元的手工作具，覆蓋在玻璃套件內。建築物的入口是位於草皮下方的車庫。入口高度為 5 公尺。緊鄰這個入口是地窖和屋子的設施室。山坡內還有兩間臥室和衛浴。這些房間的採光來自高度不一的空間以及天窗。兩間臥室中間有一道牆分開。這道牆就像是個鐵錨，提供主要中牆所需的靜態橋墩。沿著樓梯往上走就是混凝土書櫃，是鋼架的橫向支柱。

After the removal of border limit clearances only 5m x 9m are left over in this small steep lot at the vineyard at Dielsdorf. With a maximum of 83 m<sup>2</sup> above-ground level living, this lot has long been considered unbuildable. A classical residential house with solid outer walls, conventional access staircase and traffic area has no space on this site. Room and structure are one, resulting from an interdisciplinary collaboration between the architects and building engineer. The sculptured reinforced concrete and steel framework in black-coloured exposed concrete is omnipresent: walls, ceilings, floors and even the bookcase are a part of the framework. Floor beddings, sound insulation, flooring, plaster work and paint work that would cover the framework do not appear. The residence is reduced to the elementaries on naked exposed concrete, complemented through diverse handmade furniture and enveloped in a glass mantle. The subterranean access to the building is through the carport. One enters the building through an up to 5.44m high entrance. A cellar and house services room are attached to the entrance. A double bedroom with bath is likewise annexed into the slope. These rooms are provided with light through both a space divided into different heights and a skylight. This double bedroom is sectioned by a middle wall, which like an anchor, builds the static abutment for the main middle wall. Ascending the stairs one comes to the concrete bookcase, which acts as a horizontal bracing for the framework.



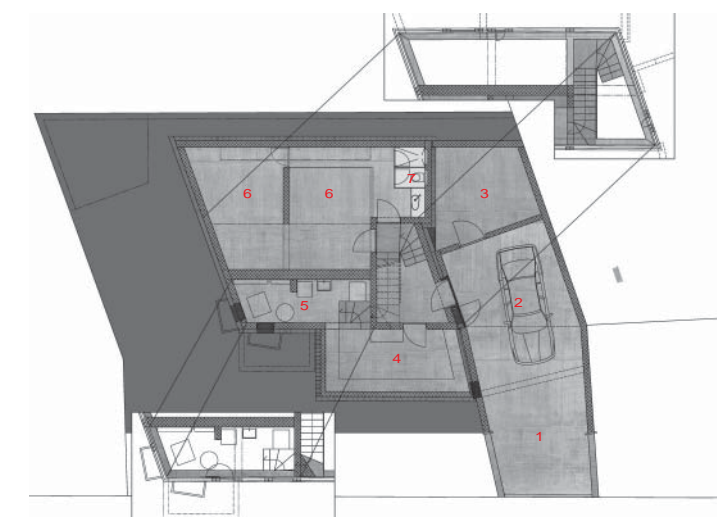


一樓平面圖 FIRST FLOOR PLAN



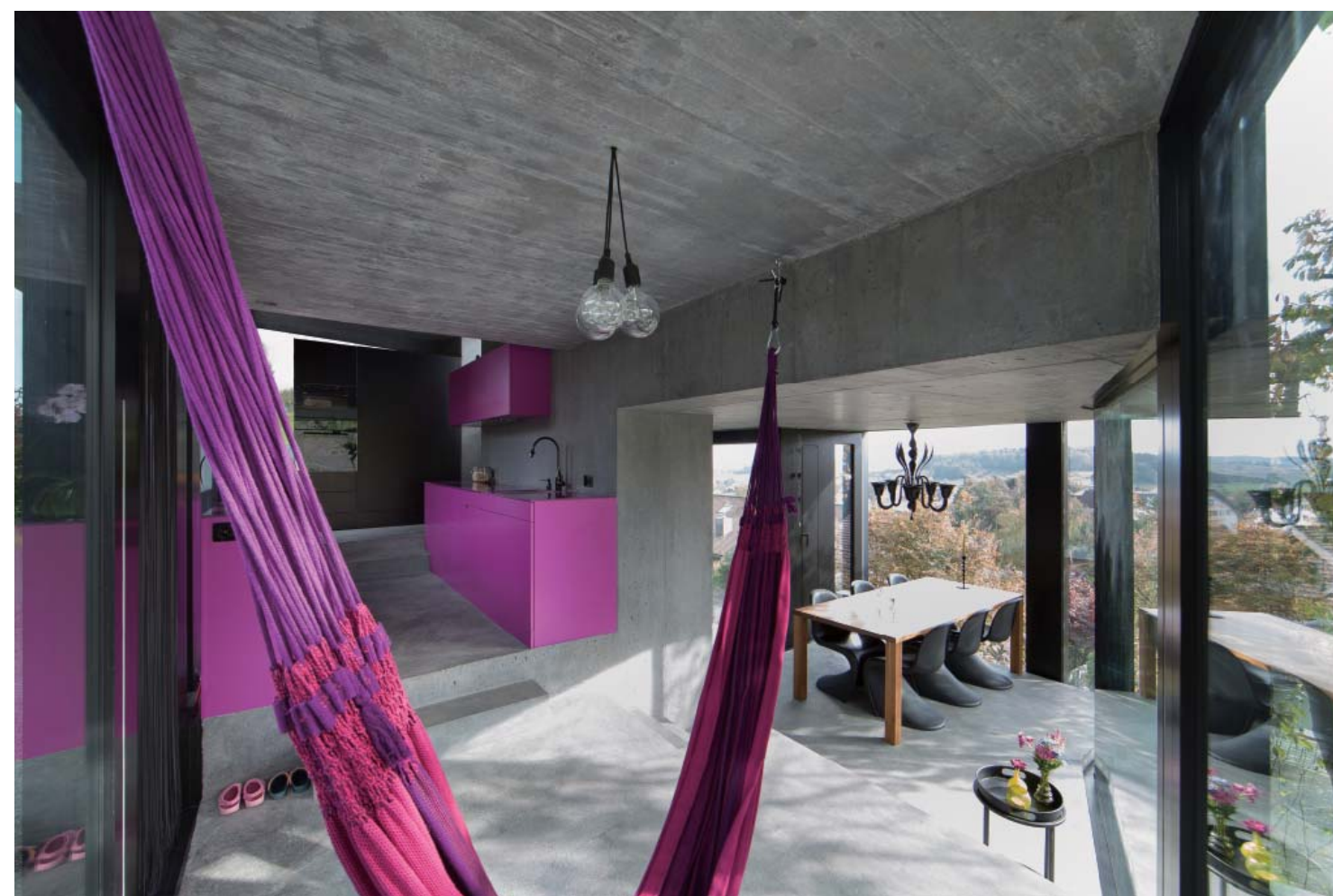
地面層平面圖 GROUND FLOOR PLAN

1. 車棚 2. 車庫 3. 地窖 4. 設施室 5. 洗衣間  
 6. 臥室 7. 衛浴 8. 書櫃 9. 餐廳 10. 多功能空間  
 11. 廚房 12. 客廳 13. 起居室 14. 主臥室
1. carport 2. garage 3. cellar 4. house services room 5. laundry room  
 6. bedroom 7. bathroom 8. bookcase 9. dining room 10. multi-purpose space  
 11. kitchen 12. living room 13. lounge area 14. master bedroom



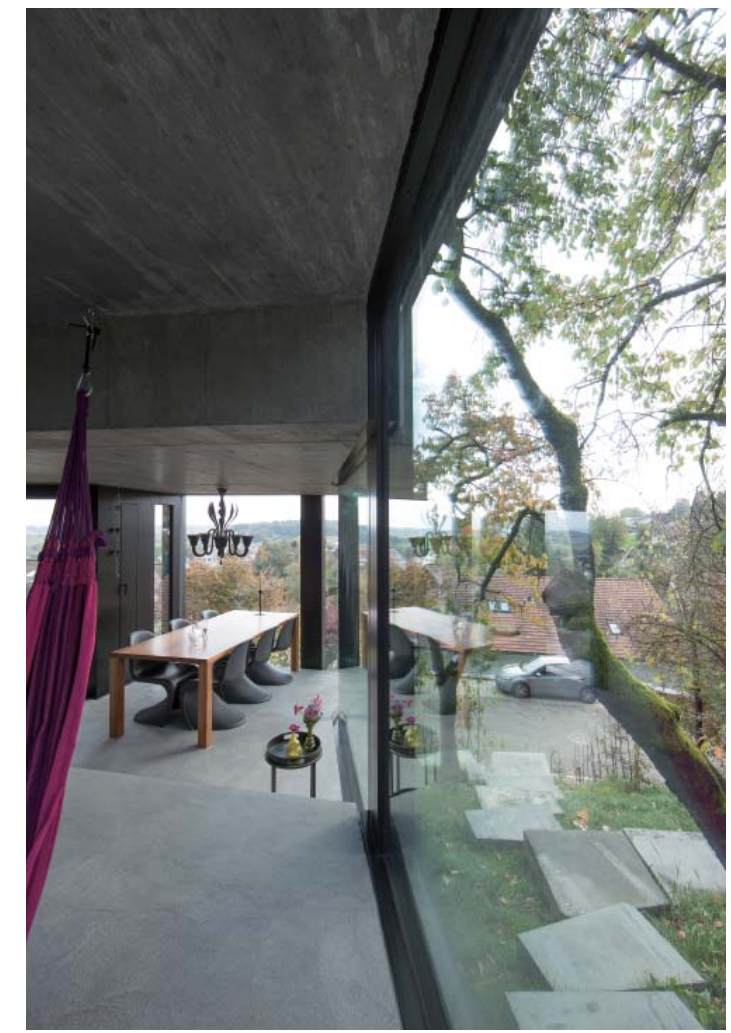
地下層平面圖 BASEMENT PLAN

右頁：室內處處可見裸露的結構鋼架，融入為空間一體  
 左頁：有如雕塑般的建築體感以質樸簡單的基本元素構成





右頁·左頁：室內光源來自高度不一的立面開口



右頁·左頁：整體建築以鋼筋混凝土  
建構而成；鋼架橫向支柱配置書櫃使用