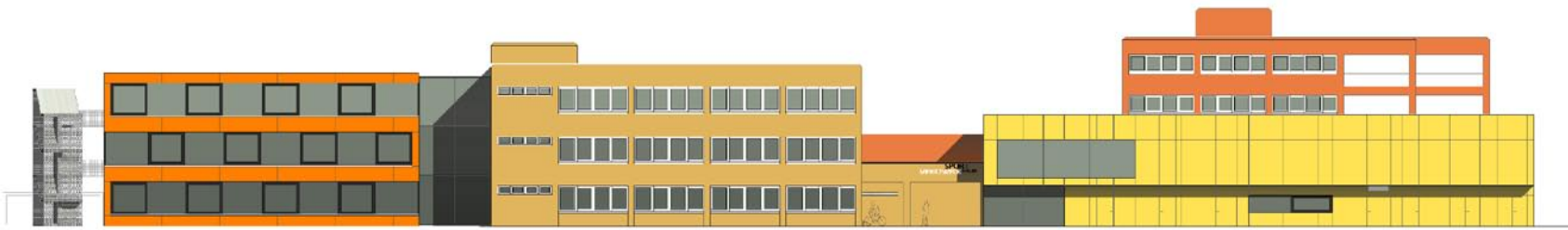
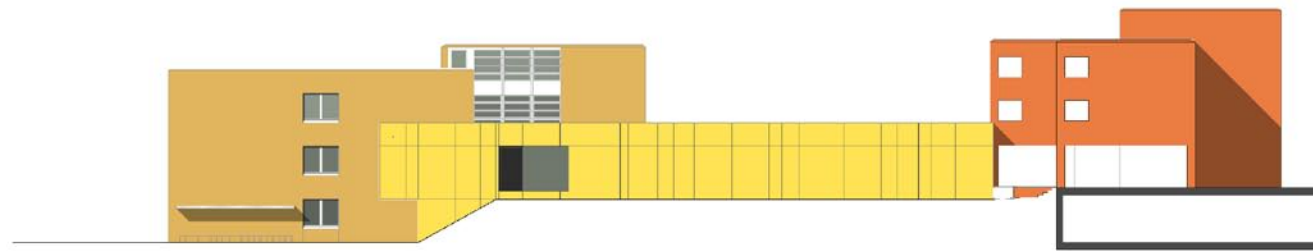


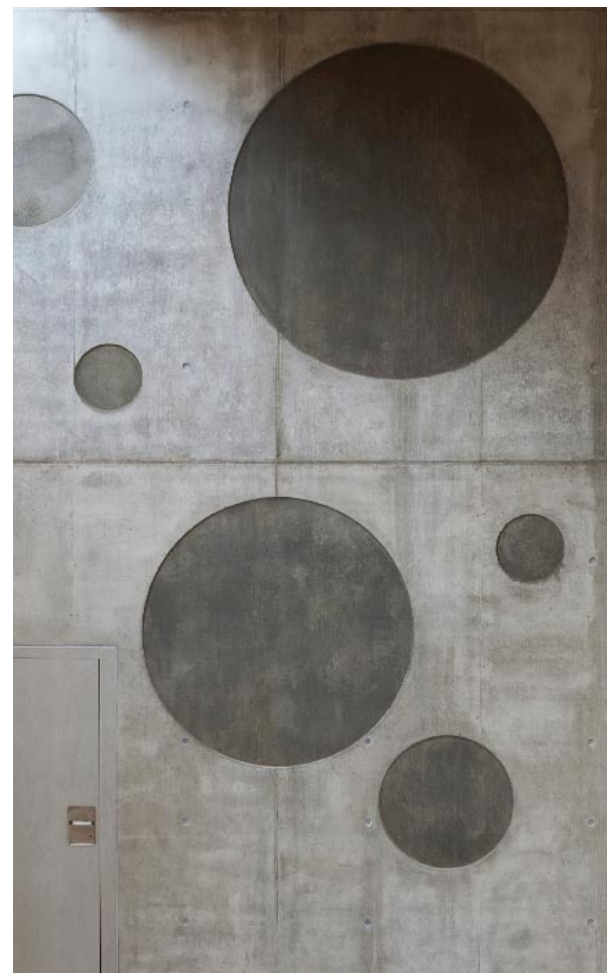
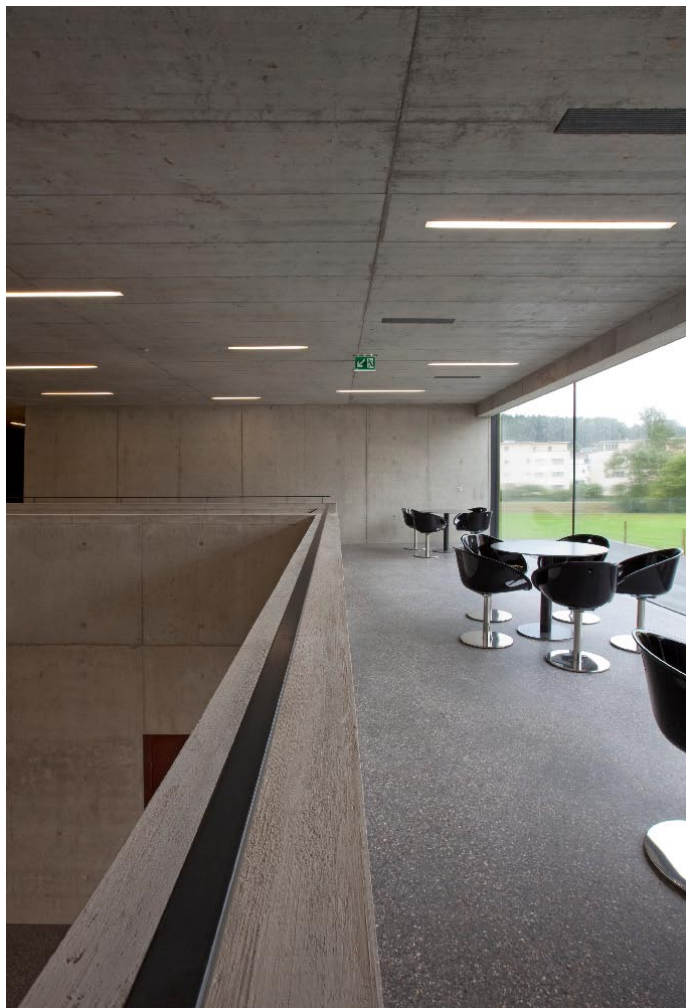
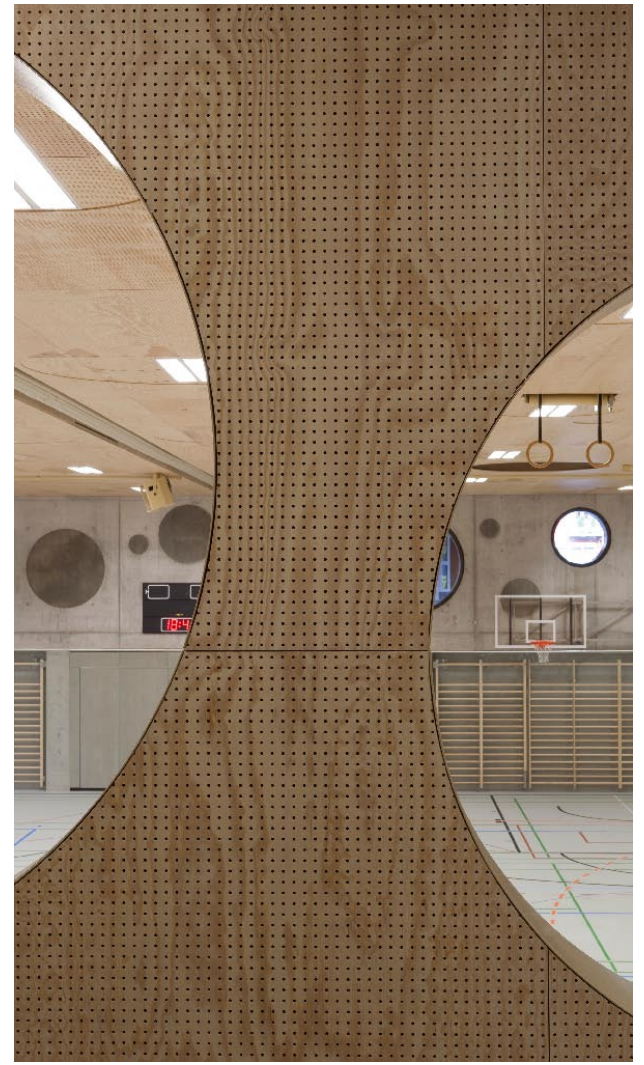
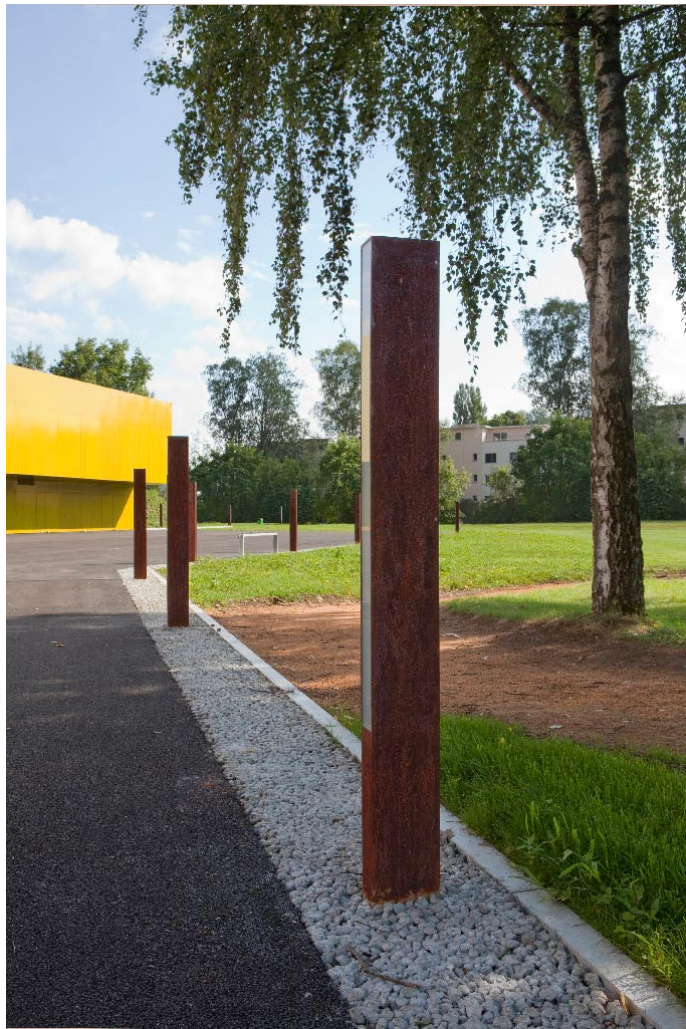
# Extension of the Multifunctional Double Sports Halls

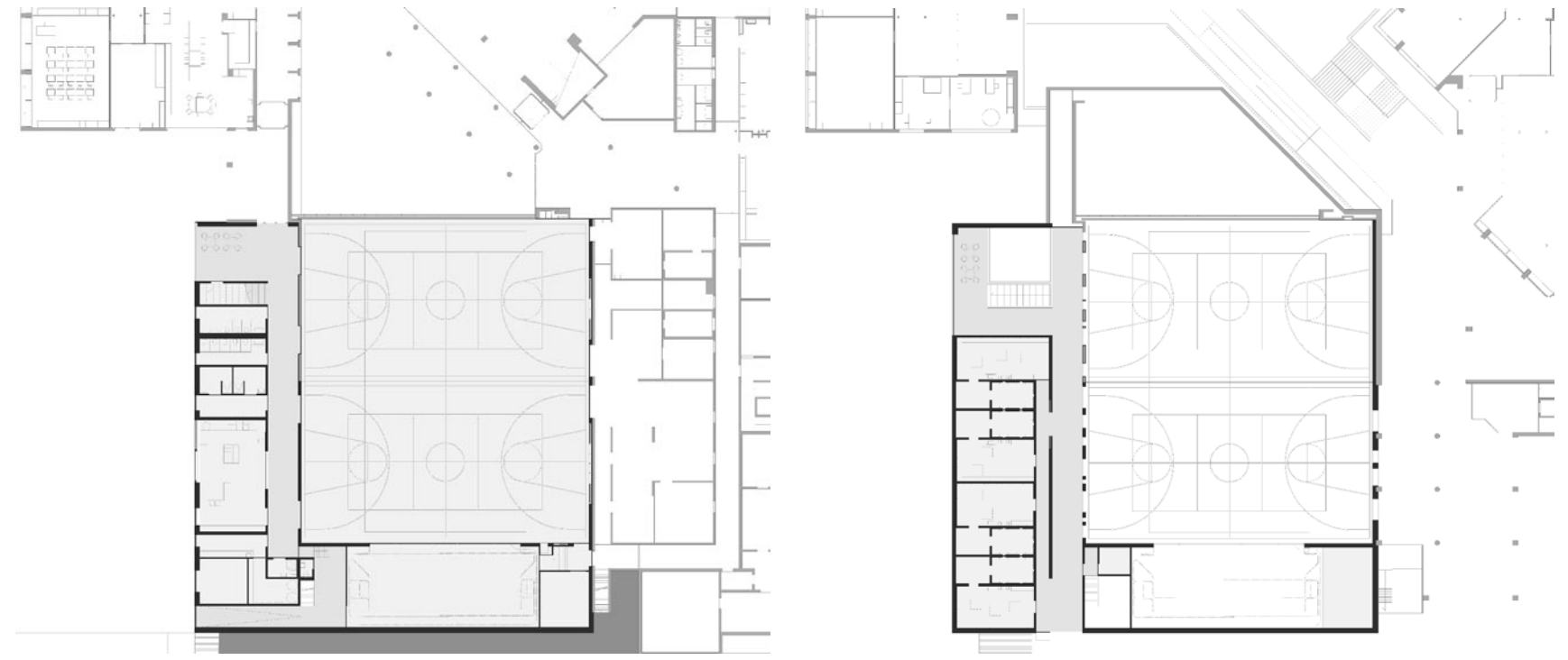
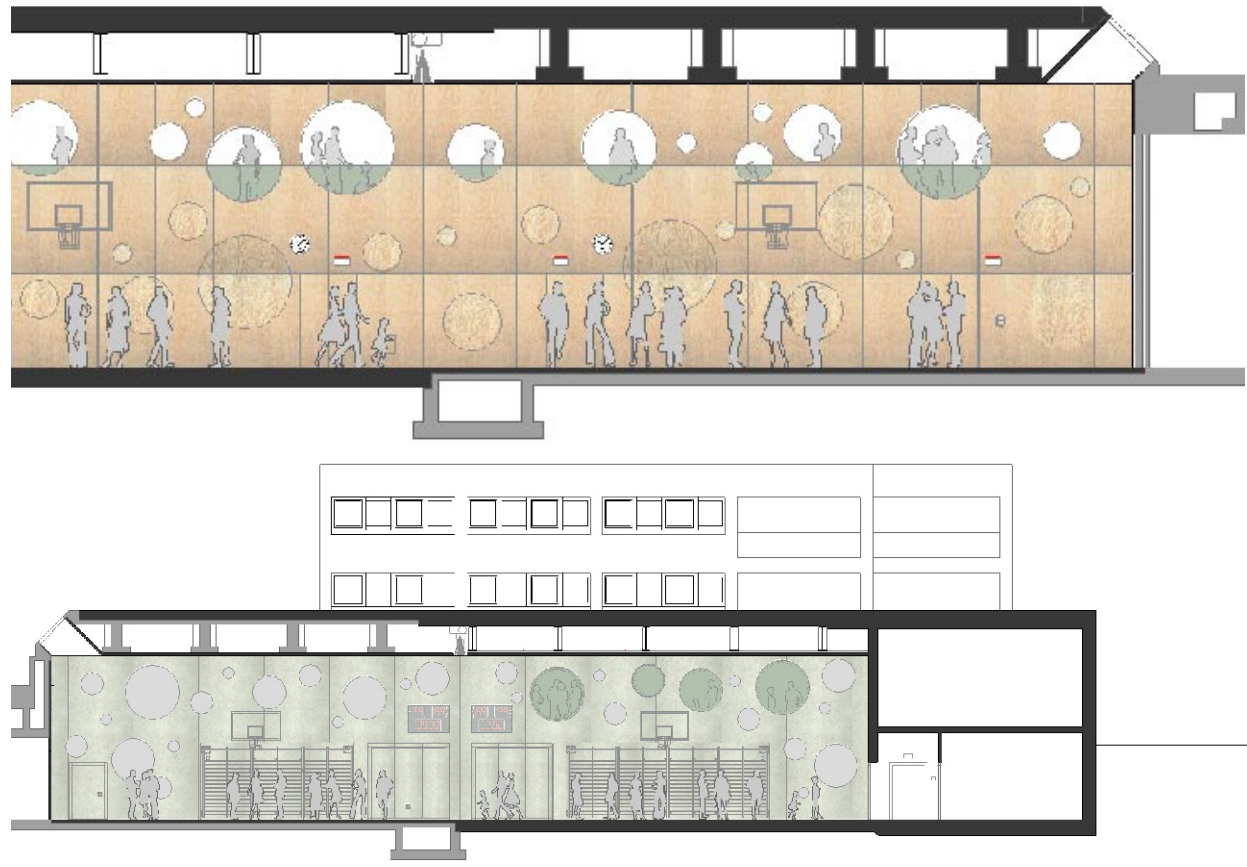
Designer: Martin Reusser, Boris Egli, Markus Müller  
Design Company: L3P Architects AG FH SIA  
Colour Design: Beat Soller, Schweizer AG  
Civil Engineer: Schiavi Partner Ingenieure AG  
Location: Graftschaftstrasse 57, 8172 Niederglatt ZH, Switzerland  
Area: 1700m<sup>2</sup>  
Photographer: Vito Stallone

The multifunctional double sports hall appears as a compact structure and so forms the architectural completion of the school grounds to the south-west. The internal structure consists of a two-storey room overview to the west and the adjacent halls to the east. The stage is arranged on the long side of the new sports hall annex. The new two-storey foyer is aligned with the outer sports area and has a generous glass facade. The toilets, office and outer equipment room are designed for the ground floor and are also accessible from outside. The change rooms and showers are found on the first floor and are accessible

through a spectator gallery that is open to the halls. For fire prevention security, the halls and the new accesses are designed as one fire area. This allows an extremely variable usage – as the name “multifunctional hall” suggests. Emergency exits lead from all areas directly outside. On the first floor a second corridor layer enables emergency exit to the south. Simultaneously, the possibility of partitioning creates the opportunity of additional dressing rooms which are directly connected with the stage through an internal staircase for theatre artists. A further advantage of the room layering is the resulting intimacy for the users of the dressing rooms.









“rothoblaas” 办公室是一个大型商业集团，专门为木材工业组装电动工具。仓库和调试室在一层，而行政室，会议室和一个可以在楼上看到的地下陈列室则在第二层。该项目旨在建立一个有高度紧凑感的建筑。这栋大楼作为这个企业的企业文化象征，代表着这个公司，这就要求这栋建筑比寻常要有一个多功能的紧凑型的玻璃外表。主体建筑采用的材料是木材，以显示自己的产品。这就要求这栋建筑比寻常要有一个多功能的紧凑型的玻璃外表。主体建筑采用的材料是木材，以显示自己的产品。 “rothoblaas” 办公室是一个大型商业集团，专门为木材工业组装电动工具。仓库和调试室在一层，而行政室，会议室和一个可以在楼上看到的地下陈列室则在第二层。该项目旨在建立一个有高度紧凑感的建筑。这栋大楼作为这个企业的企业文化象征，代表着这个公司，这就要求这栋建筑比寻常要有一个多功能的紧凑型的玻璃外表。主体建筑采用的材料是木材，以显示自己的产品。 “rothoblaas” 办公室是一个大型商业集团，专门为木材工业组装电动工具。仓库和调试室在一层，而行政室，会议室和一个可以在楼上看到的地下陈列室则在第二层。该项目旨在建立一个有高度紧凑感的建筑。这栋大楼作为这个企业的企业文化象征，代表着这个公司，这就要求这栋建筑比寻常要有一个多功能的紧凑型的玻璃外表。主体建筑采用的材料是木材，以显示自己的产品。

Circular window + circle depressions in plywood => jumping sports balls



Circular window + circle depressions in concrete => jumping sports balls

